

EzMigration User Guide

The EzMigration User Guide is designed to allow Windows users to get up and running quickly. The guide uses the following conventions: ALL CAPS for application specific terms, **bold** for required actions.

Understanding What EzMigration Does

EzMigration is a drive migration tool. EzMigration eliminates the need to transfer data to a new hard drive in piecemeal fashion, copying one file or installing one application at a time. With EzMigration, it is now possible to move the entire contents of one drive to a new drive in a single operation. This transfer is accomplished by creating an image copy of the SOURCE drive on the DESTINATION drive.

Additionally, EzMigration provides the ability to expand the partition size on the new drive to reclaim unused disk space. Because the DESTINATION drive sees the image copy created during migration as the total available space on the drive, there may be substantial unused disk space on the DESTINATION drive after a migration. For example, if the contents of a 80 GB drive are transferred to a 200 GB drive, the DESTINATION drive would contain an 80 GB partition and 120 GB of unusable space. EzMigration's partition expansion capability provides an uncomplicated point-and-click method for expanding the partition to reclaim any unused space on the new drive.

The EzMigration software is sold with a one year license. It allows a user to transfer the contents of one drive to another drive as often as necessary for one full year. The EzMigration software is recommended for users who need to perform multiple migrations.

Your DESTINATION (new) drive must be as large or larger than your SOURCE (original) drive.

Installing EzMigration

1. The EzMigration software must be installed on your hard drive. Close any open applications and disable virus protection. Insert the EzMigration Installation CD into your CD-ROM drive. When the splash screen appears, click on **INSTALL NOW**.

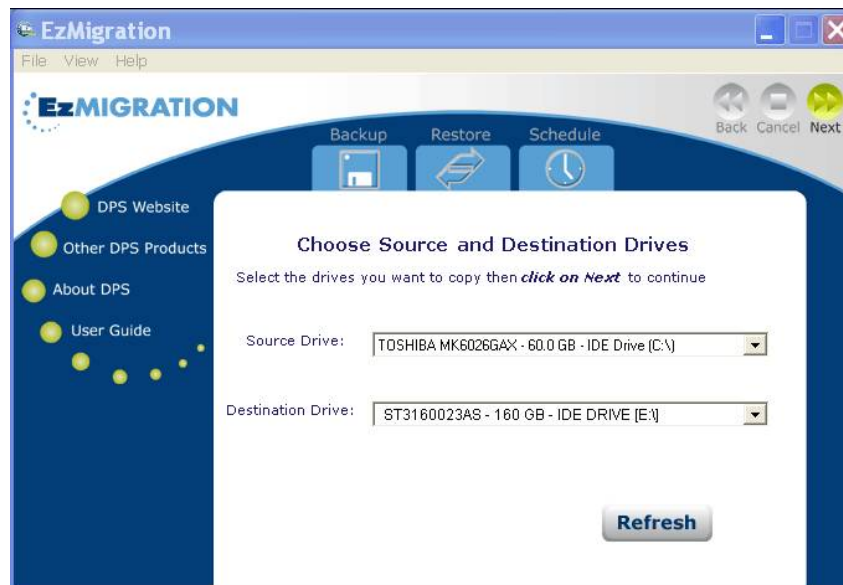
If the splash screen does not appear automatically, open My Computer or right click on the Start button and select Explore to navigate to your CD-ROM drive. Double click on the CD-ROM drive icon to launch the installation.

Alternatively, you can right click on the CD-ROM drive icon and select Explore. Locate and open the WINDOWS folder on the CD-ROM drive, then find and open the EzMigration folder. Double-click on the **EzMigration setup.exe** file. When the install screen appears, click on **INSTALL NOW** to start the installation.

If you are installing EzMigration from a web download, double click on the downloaded file to unzip it. The installation will begin automatically. If the installation does not begin automatically, navigate to the folder in which you have unzipped or expanded the EzMigration download file, then find and open the EzMigration folder. Double-click on the **EzMigration setup.exe** file.

2. When installation has completed successfully, the EzMigration application will launch automatically. Click on **ACTIVATE** to begin. If you have a license, select ENTER LICENSE and click **CONTINUE**. Enter your license code.
3. EzMigration will now search your computer for available drives. Two drop-down lists, one labeled SOURCE DRIVE and the other DESTINATION DRIVE, will appear on screen. Select your SOURCE and DESTINATION drives from the lists and click **NEXT**.

If either drive is not listed, check that the drive is properly connected and turned on. If you have neglected to connect or power on an external drive, do so now and click **REFRESH** to update the drive lists. Then select your drives and click **NEXT**.



You cannot choose your current system drive (usually C:\) as the DESTINATION drive.

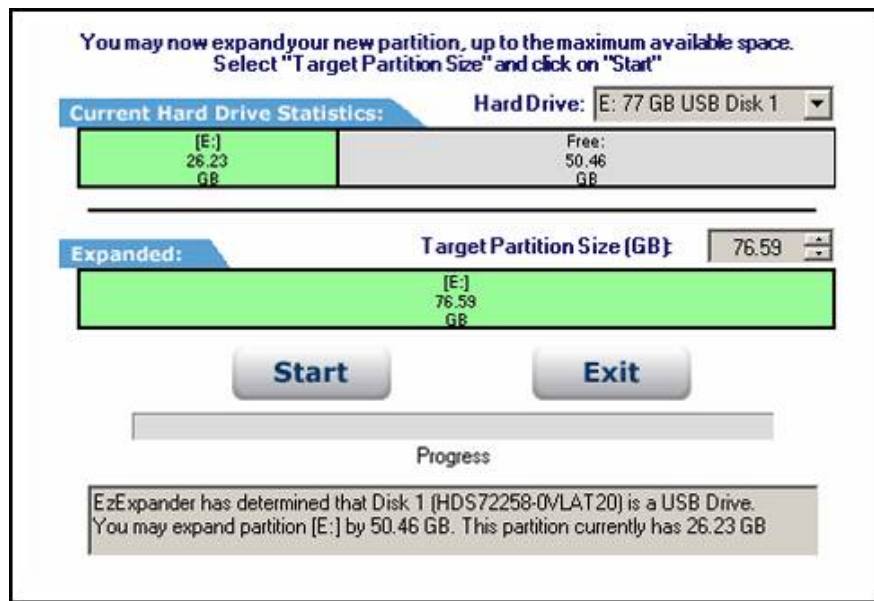
4. Once you have selected your SOURCE and DESTINATION drives, EzMigration will ask if you wish to begin the image copy. Click **YES**. EzMigration will restart your computer and begin to create an image copy (an exact duplicate) of your SOURCE drive on the new drive. A progress window will remain onscreen during copying. At

the end of the copy process, a window will appear advising that the image was successfully completed and requesting you to strike any key to continue.

The DESTINATION drive now contains an exact copy of all the data on the SOURCE drive.

5. When your computer is restarted after the IMAGE COPY, EzMigration will display the PARTITION EXPANDER tool.

When EzMigration copies an image of the SOURCE drive on the DESTINATION drive, it ends up with a partition structure on the DESTINATION drive that exactly matches the partition(s) on the SOURCE drive. (See Understanding What EzMigration Does above.) If the DESTINATION drive is significantly larger than the SOURCE drive, you may wish to take advantage of EzMigration's partition expansion capability to reclaim unused space on the DESTINATION drive.



Select your DESTINATION drive from the HARD DRIVE drop down list. Do not select your SOURCE drive (normally C:\). You cannot repartition your boot drive while it is operating as a boot drive.

In the EXPANDED box, select the partition to be expanded and use the up and down arrows to select a new size for the partition. Once you have set the TARGET PARTITION SIZE , click **START**. EzMigration will now show that the partition has been increased to the size you have selected. Click **EXIT**.

How to Get Help

If you need help beyond what is offered in this user guide, contact DPS technical support for further assistance.

By telephone	954.925.7347
By fax	954.925.2889
By e-mail	technicalsupport@EzD2D.com
By mail	3100 N. 29th Court Hollywood, Florida 33020 USA
Support hours	Monday – Friday 9AM – 5PM Eastern Time

While every precaution has been taken in the preparation of this manual, we assume no responsibility for errors or omissions. Neither, is any liability assumed for damages resulting from the use of the information contained herein.

No part of this publication may be reproduced in whole or in part, or transmitted in any form or by any means, electronic, mechanical, photocopying, recording, or otherwise, without written permission from the publisher. For information regarding permission, write to:

Data Protection Solutions
3100 North 29th Court,
Hollywood, Florida 33020 USA

Copyright © 2007 Data Protection Solutions by Arco. All rights reserved.

EzMigration User Guide

EzMigration™ is a registered trademark of Data Protection Solutions.

Windows® is a registered trademark of the Microsoft Corporation.

All other trademarks used in this text are registered trademarks of their respective owners.

Part #: 04-0100023